



Global Geodetic Observing System Geohazards

New Orleans 2005 Hurricane

Elbe 2003 Flood

Sumatra 2004 Tsunami

Kobe 1995 Earthquake

St. Helens 1980 Eruption

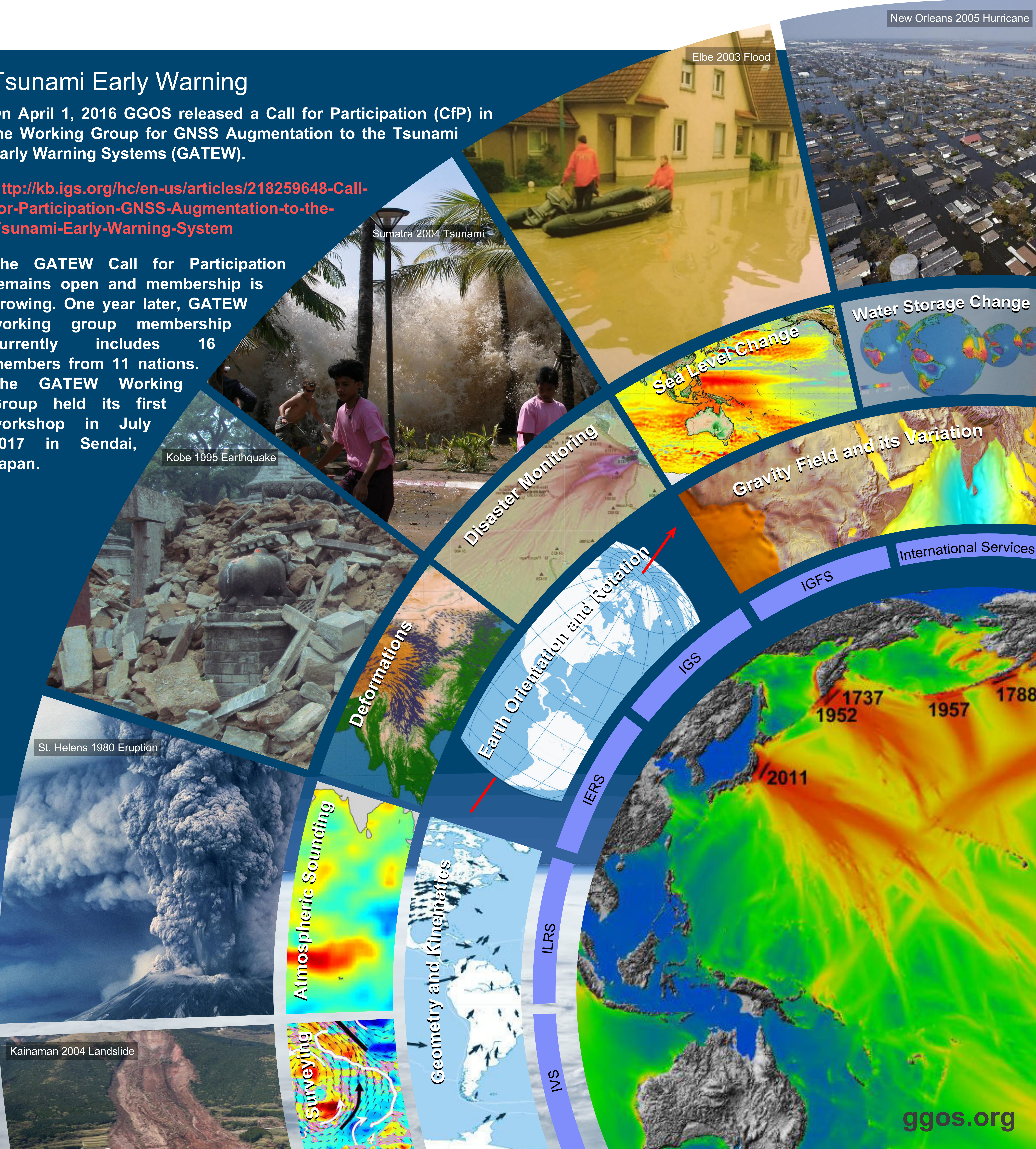
Kainaman 2004 Landslide

Tsunami Early Warning

On April 1, 2016 GGOS released a Call for Participation (CfP) in the Working Group for GNSS Augmentation to the Tsunami Early Warning Systems (GATEW).

<http://kb.igs.org/hc/en-us/articles/218259648-Call-for-Participation-GNSS-Augmentation-to-the-Tsunami-Early-Warning-System>

The GATEW Call for Participation remains open and membership is growing. One year later, GATEW working group membership currently includes 16 members from 11 nations. The GATEW Working Group held its first workshop in July 2017 in Sendai, Japan.



Disaster Monitoring

Sea Level Change

Water Storage Change

Gravity Field and its Variation

Earth Orientation and Rotation

International Services

Deformations

Atmospheric Sounding

Geometry and Kinematics

Surveying

IGS
IERS
ILRS
IVS